

Score

Wassail Song and O Come Little Children

for Singer and Harp or Harp Solo *

Traditional

arranged by Ann Carter-Cox

♩. = c..70

Voice

Harp

6

Hp.

♩ = c.. 50

10

Hp.

*Instructions for playing as a harp solo are on page 8.

12



Hp.

14

poco lento



Hp.

17

a tempo



Hp.

19

Hp.

21

$\text{♩} = 100$

Hp.

24

$\text{♩} = \text{c.}70$

Here we come a- was- sail- ing a- mong the leaves so

Hp.

Wassail Song and O Come Little Children

29 ♩ = c.. 70 relaxed rubato

green, Here we come a-wan- d'ring So fair to be seen: Love and

8va

33

joy come to you, And to you your was-sail too, And God bless you and send you a

36 ♩ = c.. 70

hap - py New Year, And God send you a hap - py New Year

40 $\text{♩} = c. 70$

We are not dai - ly beg - gars that go from door to door, We

45 *poco rit.* $\text{♩} = c. 60$

are your neigh-bors' chil- dren whom you have seen be- fore: O come lit-tle child- ren, O

51

come one and all. O come to the man - ger in Beth- le- hem's stall; and see there who's

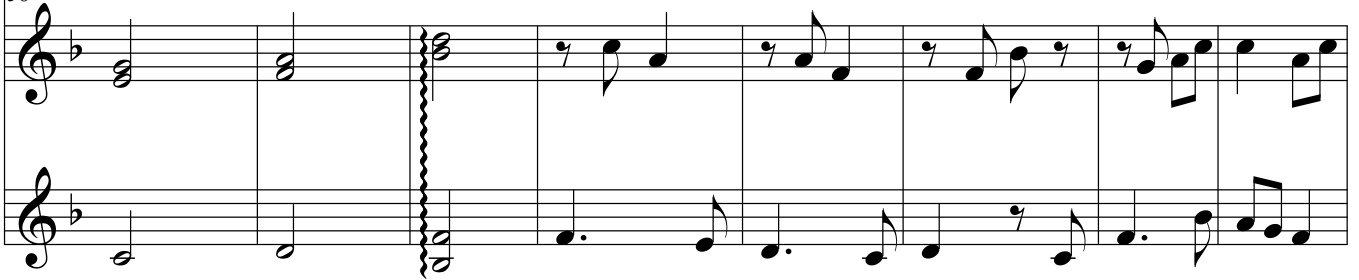
8va

58



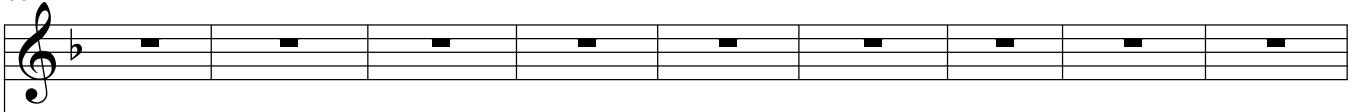
sleep- ing, the heav- en- ly boy; a gift from the Fa- ther, he brings us great joy.

58

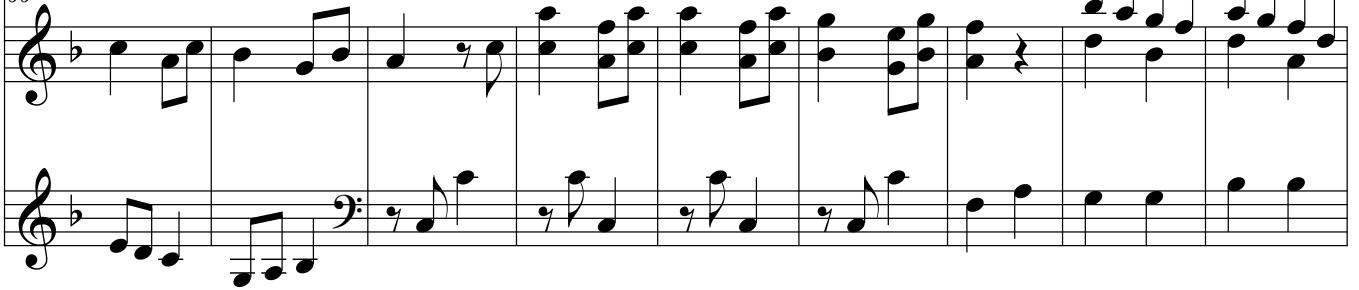


Hp.

66

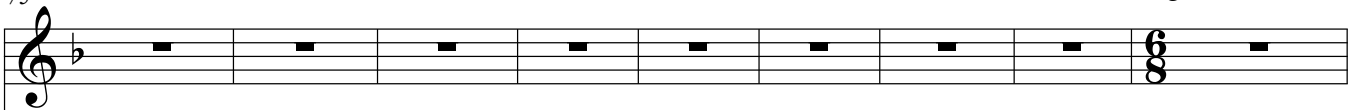


66

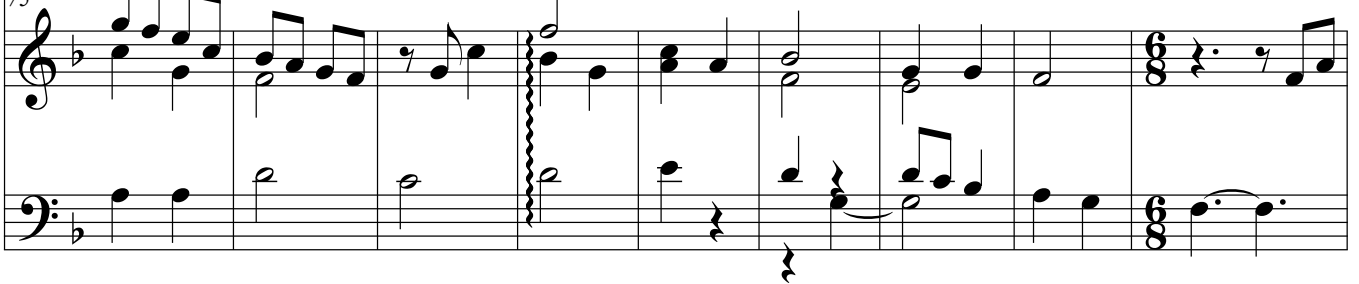


Hp.

75



75



Hp.

♩ = c. 60

84 $\text{♩} = \text{c. } 50$

God bless the mas-ter of this house, like-wise the mis-tress

90 $\text{♩} = \text{c. } 50$

too. And all the lit - le child - ren that round the tab - le go: Love and

95

joy come to you, And to you your was - sail too, May God

97

97 bless you and send__ you a hap -__ py New Year, May God

99 send you a hap ___ - py New Year.

Hp.

Hp.

Instructions for playing as a harp solo

- 1) Play measure 1 through measure 25 as written.
- 2) At the end of measure 25 skip to the pick-up note to measure 49. (The pick-up note is in the vocal line.)
- 3) Beginning with the pick-up note to measure 49 play the vocal line together with the left hand of the harp part.
- 4) In measures 57, 58, 59 and 60 play both left and right hands of the harp part with the vocal line.
- 5) In measure 61 return to playing the vocal line together with the left hand of the harp part.
- 6) Beginning in measure 64 play only the harp part to the end of the piece.